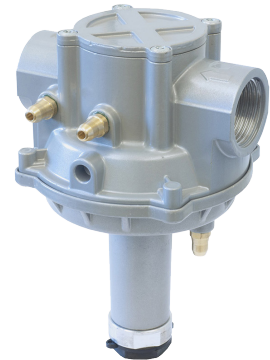


# Ratio Governors

The gas pressure governors with / without filter, and with double safety diaphragm in Pietro Fiorentini's range are equipped with balanced plug. Governors are the ideal solution for feeding burners. They can be used with pre-filtered non-corrosive gases and are widely used in low-pressure natural gas distribution networks to industrial, commercial and residential users. These devices comply with EN 88-1.



Commercial users



Residential users



Medium/small industry

Features	Values	
Design pressure (DP)	35 kPa 5 psig	
Operating ambient temperature*	from -10°C to + 60°C from 14°F to +140°F	
Input pressure range	Wd +2 kPa to 35 kPa Wd +8" w.c. to 5 psig	
Adjustment range of downstream pressure	Ratio	from 0.2 kPa to 15 kPa 0.8" w.c. to 2.17 psig
	Compact version	from 0.5 kPa to 15 kPa from 2" w.c. to 2.17 psig
Accessories*	Integrated inlet filter, inlet and outlet pressure ports	
Accuracy class (AC)	up to 15	
Shut-off overpressure (SG)	up to 30, minimum 0.75 kPa   3" w.c.	
Nominal dimensions DN <ul style="list-style-type: none"> <li>also available NPT (ASME B1.20.1)</li> <li>flanges (ASME B16.5)</li> </ul>	DN 15   1/2"; DN 20   3/4"; DN 25   1"; DN 32   1-1/4"; DN 40   1-1/2"; DN 50   2"; DN 65   2-1/2"; DN 80   3"; DN 100   4"	
Connections*	<ul style="list-style-type: none"> <li>Gas (as per UNI EN ISO 228-1:2003);</li> <li>Flat swivel joint (as per NF E29-533: 2014 and NF E29-536: 2017);</li> </ul>	

(\*) Note: Different functional features and/or extended temperature ranges available on request. Stated temperature ranges are the maximum for which the equipment's full performance, including accuracy, are fulfilled. Standard product may have a narrower range.

Table 1 Features

## Materials and Approvals

Part	Material
<ul style="list-style-type: none"> <li>Diaphragm</li> <li>O-rings</li> </ul>	Nitrile rubber*
Caps	Plastic
Springs	Steel
<ul style="list-style-type: none"> <li>Equipment body</li> <li>Lids</li> </ul>	Aluminum alloy

**NOTE:** The materials indicated above refer to the standard models. Different materials can be provided according to specific needs.

**Table 2** Materials

## Construction Standards and Approvals

The device is designed in compliance with European standard EN 88-1. The regulator is in accordance with:



EN 88-1



CSA 6.22

## Ratio competitive advantages



Double safety diaphragm



Balanced shutter



Wide output pressure range



Integrated filter option



Suitable for outdoor installations



Biomethane compatible and 20% Hydrogen blending compatible. Higher blending available on request