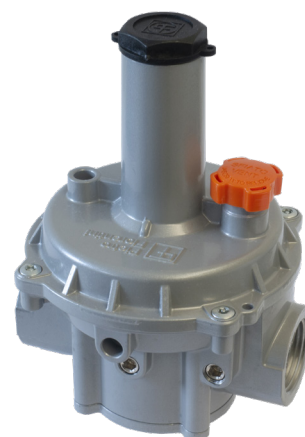


# STD Governors

The gas pressure governors with / without filter, and with double safety diaphragm in Pietro Fiorentini's range are equipped with balanced plug. Governors are the ideal solution for feeding burners. They can be used with pre-filtered non-corrosive gases and are widely used in low-pressure natural gas distribution networks to industrial, commercial and residential users. These devices comply with EN 88-1.



Commercial fixtures



Residential fixtures

Small/medium  
industry

Features	Values	
Design pressure (DP)	0.1 MPa 1 bar	
Operating ambient temperature*	from -15°C to + 60°C from -5°F to +140°F	
Input pressure range	Wd+0.25 kPa to 50 kPa Wd+2.5 mbar to 500 mbar	
Adjustment range of downstream pressure	STD	from 0.5 kPa to 30 kPa from 5 mbar to 300 mbar
	Compact version	from 0.5 kPa to 15 kPa from 5 mbar to 150 mbar
Accessories*	Integrated inlet filter, inlet and outlet pressure ports	
Accuracy class (AC)	up to 15	
Shut-off overpressure (SG)	up to 30, minimum 0.75 kPa   7.5 mbar	
Nominal dimensions DN • also available NPT (ASME B1.20.1) • flanges (ASME B16.5)	DN 15   1/2"; DN 20   3/4"; DN 25   1"; DN 32   1-1/4"; DN 40   1-1/2"; DN 50   2"; DN 65   2-1/2"; DN 80   3"; DN 100   4"	
Connections*	<ul style="list-style-type: none"> <li>• Gas (as per UNI EN ISO 228-1:2003);</li> <li>• Flat swivel joint (as per NF E29-533: 2014 and NF E29-536: 2017);</li> </ul>	

**(\*) REMARK: Different functional features and/or extended temperature ranges available on request. Stated temperature ranges are the maximum for which the equipment's full performance, including accuracy, are fulfilled. Standard product may have a narrower range.**

**Table 21** Features

## Materials and Approvals

Part	Material
<ul style="list-style-type: none"> <li>• Diaphragm</li> <li>• O-rings</li> </ul>	Nitrile rubber*
<ul style="list-style-type: none"> <li>• Caps</li> </ul>	Plastic
<ul style="list-style-type: none"> <li>• Springs</li> </ul>	Steel
<ul style="list-style-type: none"> <li>• Equipment body</li> <li>• Lids</li> </ul>	Aluminium alloy

**(\*) REMARK: Different materials can be provided according to specific needs.**

**Table 22** Materials

## Construction Standards and Approvals

The device is designed in compliance with European standard EN 88-1.  
The regulator is in accordance with:



EN 88-1



CSA 6.22

## STD governors competitive advantages



Operation starting with  
2.5 mbar of  $\Delta P$



Double safety diaphragm



Balanced shutter



Wide output pressure range



Integrated filter option



Suitable for outdoor installations



Compatible with biomethane and  
blended hydrogen up to 20%.  
Higher mixtures available on request