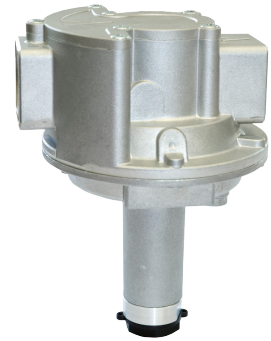


Zero Governors

The gas pressure governors with / without filter, and with double safety diaphragm in Pietro Fiorentini's range are equipped with balanced plug. Governors are the ideal solution for feeding burners. They can be used with pre-filtered non-corrosive gases and are widely used in low-pressure natural gas distribution networks to industrial, commercial and residential users. These devices comply with EN 88-1.



Commercial users



Residential users



Medium/small industry

Features	Values	
Design pressure (DP)	35 kPa 5 psig	
Operating ambient temperature*	from -10°C to + 60°C from 14°F to +140°F	
Input pressure range	Wd+2 kPa to 35 kPa Wd+8" w.c. to 5 psig	
Adjustment range of downstream pressure	Zero	from -0.5 kPa to 0.5 kPa from -2" w.c. to 2" w.c.
	Compact version	from 0.5 kPa to 15 kPa from 2" w.c. to 2.17 psig
Accessories*	Integrated inlet filter, inlet and outlet pressure ports	
Accuracy class (AC)	up to 15	
Shut-off overpressure (SG)	up to 30, minimum 0.75 kPa 3" w.c.	
Nominal dimensions DN • also available NPT (ASME B1.20.1) • flanges (ASME B16.5)	DN 15 1/2"; DN 20 3/4"; DN 25 1"; DN 32 1-1/4"; DN 40 1-1/2"; DN 50 2"; DN 65 2-1/2"; DN 80 3"; DN 100 4"	
Connections*	<ul style="list-style-type: none"> • Gas (as per UNI EN ISO 228-1:2003); • Flat swivel joint (as per NF E29-533: 2014 and NF E29-536: 2017); 	

(* Note: Different functional features and/or extended temperature ranges available on request. Stated temperature ranges are the maximum for which the equipment's full performance, including accuracy, are fulfilled. Standard product may have a narrower range.

Table 1 Features

Materials and Approvals

Part	Material
<ul style="list-style-type: none"> Diaphragm O-rings 	Nitrile rubber*
Caps	Plastic
Springs	Steel
<ul style="list-style-type: none"> Equipment body Lids 	Aluminum alloy

NOTE: The materials indicated above refer to the standard models. Different materials can be provided according to specific needs.

Table 2 Materials

Construction Standards and Approvals

The device is designed in compliance with European standard EN 88-1. The regulator is in accordance with:



EN 88-1



CSA 6.22

Zero competitive advantages



Double safety diaphragm



Balanced shutter



Wide output pressure range



Integrated filter option



Suitable for outdoor installations



Biomethane compatible and 20% Hydrogen blending compatible. Higher blending available on request